

RADFORD
UNIVERSITY

Presents

4 YR. COLLEGE / UNIVERSITY OPTION

WHAT ARE COLLEGES LOOKING FOR IN THEIR APPLICANTS?

HOW COULD STUDENTS MAKE THEIR COLLEGE APPLICATIONS "POP"?

By:

Guadalupe Sanchez

Assistant Director of Multicultural Recruitment

gsanchez4@radford.edu

(540) 831-1176



HOLISTIC REVIEW

- **GPA AND TEST SCORES ARE NOT THE SOLE DETERMINING FACTORS IN ADMISSIONS.**
- **BEING ABLE TO SHOW PROSPECTIVE COLLEGES THAT YOU CHALLENGED YOURSELF ACADEMICALLY IS IMPORTANT.**
- **ADMISSIONS OFFICERS WILL LOOK AT AP, HONORS, INTERNATIONAL BACCALAUREATE (IB) AND DUAL CREDIT COURSES.**
- **ADMISSIONS OFFICERS WANT TO SEE IF YOU WILL SUCCEED IN COLLEGE.**





HIGH SCHOOL TRANSCRIPT

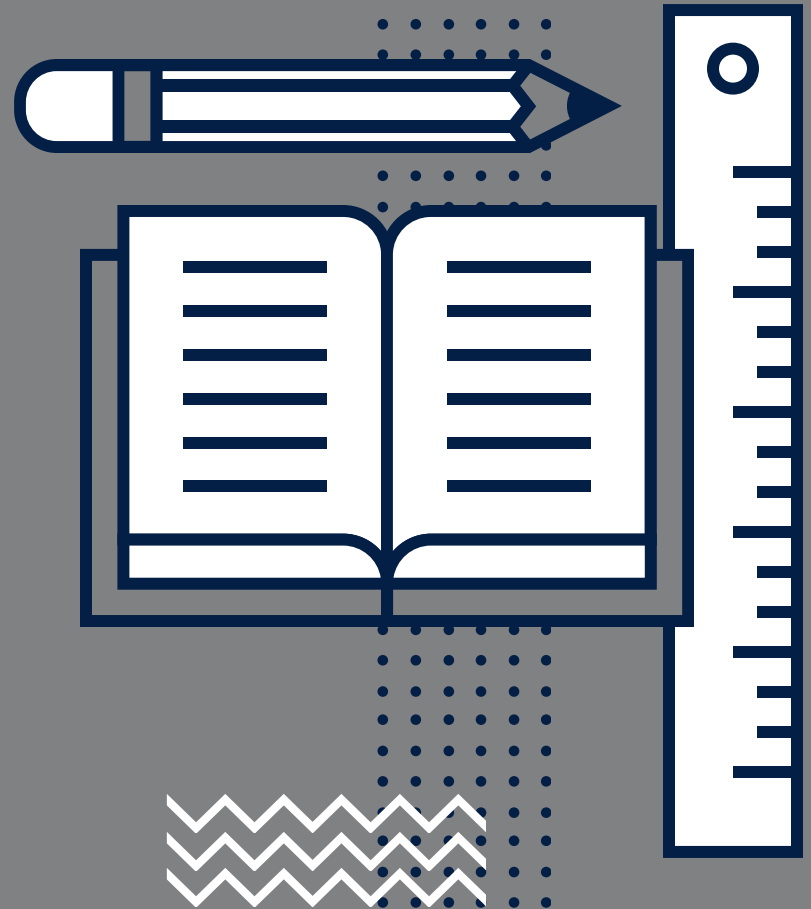
- **GPA**
- **CLASS RANK**
- **RIGOROUS COURSEWORK**
- **AP, HONORS, IB, DUAL CREDIT**
- **SENIOR YEAR COURSE LOAD**





SAT/ACT SCORES

- ONE FACTOR IN THE COLLEGE ADMISSIONS PROCESS
- THE 50TH-PERCENTILE SAT COMPOSITE SCORE—THE AVERAGE SAT SCORE—IS BETWEEN 1050 AND 1060
- THE AVERAGE ACT SCORE IS 21
- TEST OPTIONAL INSTITUTIONS
- IMPORTANT FOR SCHOLARSHIPS






PERSONAL STATEMENT/ESSAY

- **ADMISSIONS OFFICERS WANT TO SEE ESSAYS THAT GO FOR A PERSONAL CONNECTION.**
- **FOCUS ON SHOWING WHO YOU TRULY ARE.**
- **STICK WITH THE GIVEN PROMPT AS YOU WRITE AND REMEMBER TO INCLUDE THE REASON WHY YOU WANT TO ATTEND A PARTICULAR SCHOOL.**





LETTERS OF RECOMMENDATION

- **YOU CAN REQUEST LETTERS OF RECOMMENDATION FROM TEACHERS, COUNSELORS, MENTORS AND COACHES.**
 - **A GOOD RECOMMENDATION LETTER SUPPORTS A SOLID APPLICATION BY AFFIRMING ALL OF YOUR BEST QUALITIES AS A STUDENT.**
 - **BE SURE TO RECEIVE LETTERS FROM PEOPLE THAT KNOW YOU WELL.**
- 



EXTRACURRICULAR INVOLVEMENT

01 ATHLETICS/SPORTS

02 WORK EXPERIENCE

03 COMMUNITY SERVICE/ VOLUNTEERING

04 CLUBS & ORGANIZATIONS

05 INTERNSHIPS





MAKING YOUR APP "POP"

01 CRAFT OVERALL NARRATIVE

02 CONVEY INTEREST IN THE INSTITUTION

03 ATTENTION TO DETAIL

04 ESTABLISH RELATIONSHIP WITH ADMISSIONS



**THANK
YOU!**

