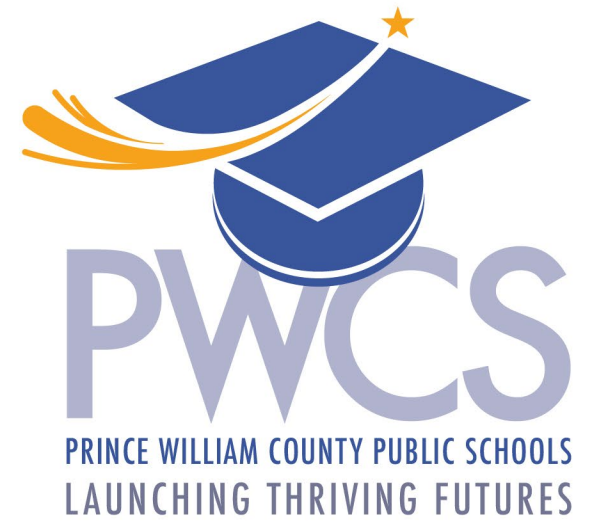


Forest Park High School
Principal's Advisory Council
September 16, 2024





Administrative Team

- Richard Martinez, Principal
- John Geisinger, Assistant Principal
- Dr. Diane Maloney, Assistant Principal
- James Smith, Assistant Principal
- Laura Cross, Assistant Principal
- Kamau Street, Assistant Principal

Administrative Team

- Steve Smith, Director of School Counseling
- John Verzosa, Administrative Intern
- James Bricker, Director of Student Activities
- Tiffani Washington, Assistant Director of Student Activities
- Joseph Walker, School Security Officer
- Officer Obuabang, SRO (not pictured)





Parent Liaison

- Ms. Ceron
- CeronKM@pwcs.edu
- Focus of the School Parent Liaison (SPL)
 - Remove barriers to access information and resources
 - Engage families in the educational process of their students regardless of family needs.
 - Instrumental in the advancement of the Diversity-Equity-Inclusivity framework to support (1) access and opportunity, (2) resource equity, (3) communication and engagement, as well as (4) intercultural competence and inclusion for our students and families.

Forest Park High School

Motto: Expect Excellence

Vision Statement: As a community, Forest Park High School will continue to expect excellence by providing a rigorous academic program for all students which emphasizes high expectations and life-long learning.

Mission Statement: As a community, Forest Park High School will implement best practices that lead to continual improvement of student learning and achievement

- **Commitment 1:**
 - Learning and Achievement for All
- **Commitment 2:**
 - Positive Climate and Culture
- **Commitment 3:**
 - Family and Community Engagement
- **Supporting PWCS Vision**
 - *Every student will graduate on time with the knowledge, skills, and habits of mind necessary to create a thriving future for themselves and their community.*

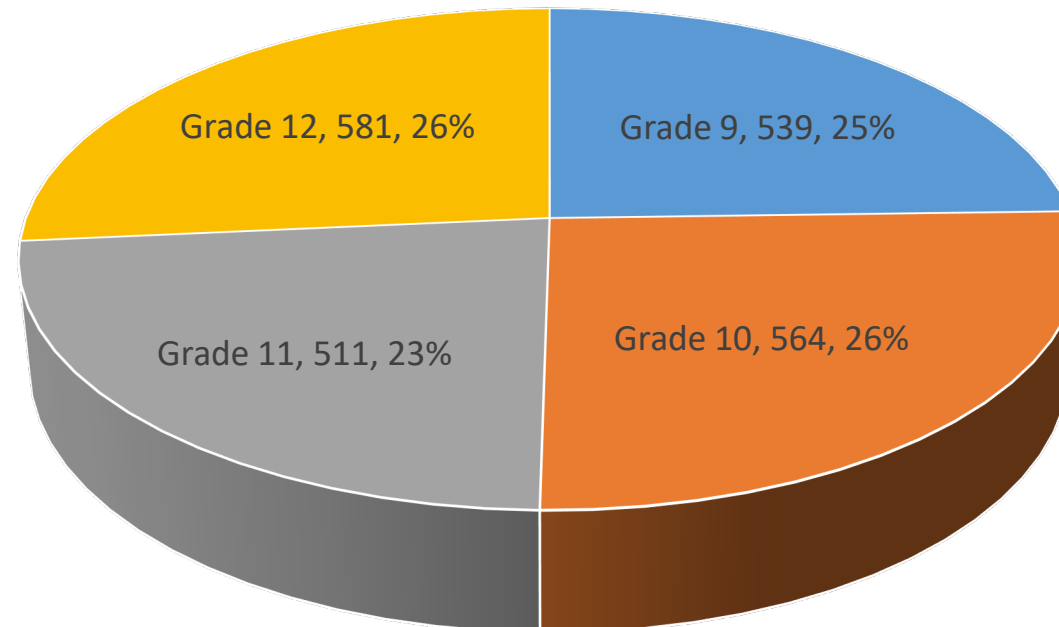


Budget Based Finance Projections

9-624; 10-565; 11-523; 12-615: TOTAL 2327

Grade Enrollments – Total 2292 students

Under projection by **35**



■ Grade 9 ■ Grade 10 ■ Grade 11 ■ Grade 12





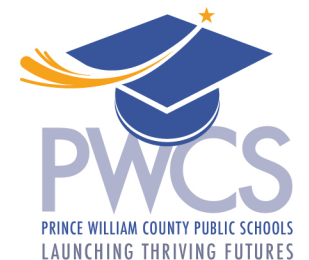
Budget

- **Budget:** Per Pupil allocation of \$19.325 million based on enrollment of 2,327 (Currently see 2,292). **Difference of 35. Possible reduction of \$0.233 million.**
- **Fixed Allocations** (36.6 v 30.2 (23-24) funded staff): \$3.451 million
- **Extra Curricular Stipends:** \$0.4 million
- **Athletic Field Trips:** \$0.031 million
- **Athletic Officials:** \$0.024 million
- **Substitutes:** \$0.026 million
- **Travel Expenses:** \$0.003 million
- **Administrative Association Fees:** \$0.002 million
- **Other** (graduation): \$0.015 million
- **Total Allocations:** \$19.325 million (per pupil allocation) +/- ??? (enrollment adjustment)
- **Replacement Equipment Allocation:** \$0.101 million
- **TOTAL FUNDING: \$23.373 million**
- **Carryover:** Attempting to carry \$0.150 million (will not know until final numbers are computed)
- **Staffing/Flex Fund** for 198.4 positions.
- **FPHS budget is operating at 92.8% staffing**
- **Does not include 6th period stipends**(currently have 21 at \$22,200). Anticipate amount at about \$470K. This comes from budget which is already losing about \$233,000.



Staffing

- New positions
 - 1.0 Assistant DSA
 - 2.0 TAs to support On-time Graduation and Interventions (brought in late last year)
 - 1.0 EL Teacher
 - 1.0 HPE Teacher
 - 1.0 English Teacher
 - 1.0 Math Teacher
 - 2.0 SpEd Teaching Assistants
 - 1.0 Administrative Assistant School Counseling
- To be filled
 - 2.0 Teaching Assistants



Level 2 Programs

- 3 Intellectual Disability
- 3 Autism
- 2 Intellectual Disability –Severe

- The programs have 7 Teaching Assistants
- Dr. McDade funded 2 additional Teaching Assistants to support Special Education Program. This brings total of funded TAs to 6.



Met Needs of building (prioritizing)

- Technology
 - Replacement of lost student laptops
 - Replacement of printers
 - Updated school Intercom System
- Furniture
 - Classroom desks and chairs
 - Teacher desks (not complete)
 - Update offices (not complete)
 - Gifted Classroom
- Security
 - Additional cameras
- Incentives (student)
 - Attendance
 - Tardy
- Equipment
 - Instructional
- Marketing
 - Banners
 - 25th Anniversary
 - Hall of Honor Opening
- Instruction
 - Textbooks and ancillaries
- Trailers
 - Received and equipped 3 trailers for instructional use



Time to Celebrate

- AP Scores 3+ up 1.3%
 - WL up 6.1%
 - Math up 5.4%
 - SS up 1.2%
 - Spanish Language up 35%
 - English Language up 7.7%
 - Calculus AB up 16.3%
 - Comp Sci A up 0.7%
 - Statistics up 12.9%
 - Physics 2 up 36.8%
 - Government up 31.6%
 - Human Geography up 51.2%
 - Psychology up 11.9%
 - US History up 42.5%
- Federal Accountability Forecasts:
 - Reading up 1.29%
 - Science up 1.39%
 - WH I up 0.52%
 - WH II up 1.12%
- Blue Ribbon Program in Music
- ELs had a 17 point or 37% increase in student Access test levels. Highest in county.
- All Class of '24 active seniors earned their diplomas. No active senior attended summer school.
- Had multiple sports and clubs earn group/individual district, regional, state/national recognitions, as well as sponsor and coach recognitions.



WHAT IS AN ENGAGED STUDENT?

NOT ENGAGED

- Head down or not looking towards teacher or task
- Not taking notes or completing task
- On phone or computer off task
- Headphones in
- Talking off task with peers
- Not in classroom at all



PASSIVELY ENGAGED

- Head up and looking at teacher or task
- Taking notes or completing designated task
- Computer open to task
- May not understand but is complying with directions
- Not asking questions when confused
- Not discussing with peers



ACTIVELY ENGAGED

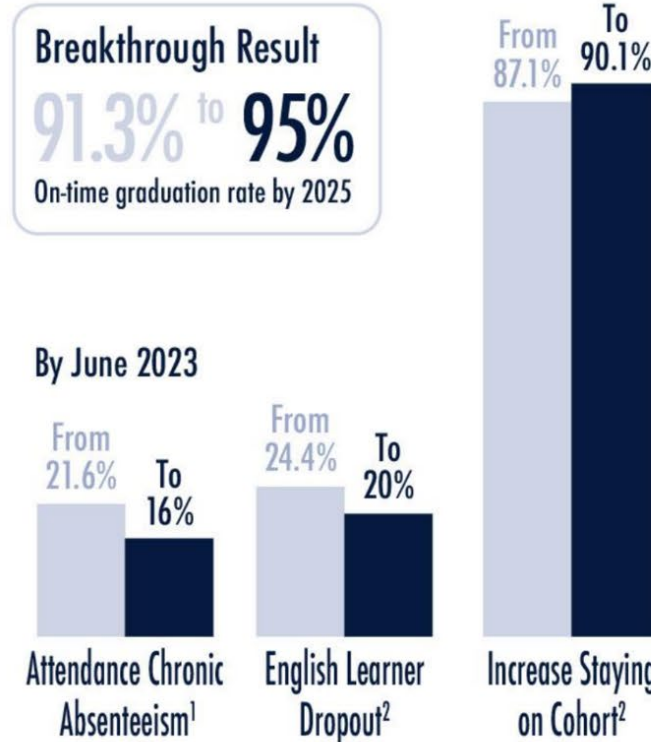
- Head up and looking at teacher or task
- Taking notes or completing designated task
- Computer open to task
- Understands content and can explain what they're learning
- Asking questions when confused or curious
- Discussing content with peers



Current Division Data

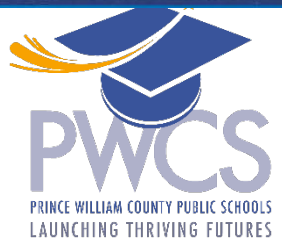
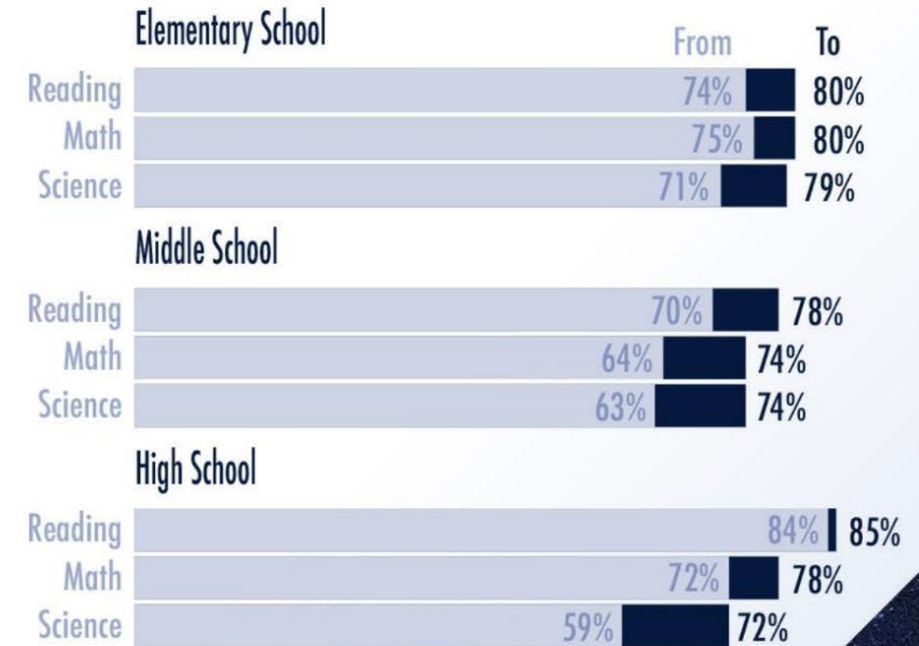
Forest Park is on the move!

PWCS Wildly Important Goals



1 - SY23 preliminary from DART: 21.54% 2 - SY23 preliminary data TBD

Student Achievement (SY23 to SY24)





Current State

1. Learning and Achievement for All
 - Math: EL scores did not increase, however number of ELs in Algebra increased.
 - Reading: Focus on ELs and SWDs. has shown increase of 18% and 10% over past three years.
 - Writing: ELs increased by 18%.
 - Biology: Overall 3% increase in last three years. Els have increased by 15% from prior year and trending a 12% increase over three years.



Current State

2. Positive Climate and Culture

- Reduced overall Chronic Absenteeism from 21% to 18%
- On-time Graduation Rate (OGR) increased by 2.6% to 96.9% for a three-year average of 95.4%
- Cohort dropout rate dropped 2.6% to 1.9%. Cohort is determined by year student enters 9th grade.

Forest Park Chronically Absent Students

25% In 21-22	To	21%! In 22-23
21%! In 22-23	To	17%! In 23-24
17%! In 23-24	To	Goal is <15%



This Photo by Unknown author is licensed under [CC BY-SA-NC](#).



Current State

3. Family and Community Engagement

- PAC met 8 times
- Increased amount of information flowing from FPHS via School Status
- Bruins Boosters meets monthly
- Engagement series being organized by Parent Liaison and FACES staff member.

Commitment I:

- Objective 1.1: PWCS will provide equitable opportunities for all students to achieve at high levels.
- Objective 1.2: PWCS will prepare all students for post-secondary education and the workforce.
- Objective 1.3: PWCS will prepare all staff members to support and challenge all students.

Commitment II:

- Objective 2.1: PWCS will provide a learning environment which fosters inclusivity, connectedness, and encourages social and emotional wellness for all.
- Objective 2.3: PWCS facilities will be welcoming, safe, and sustainable.

Commitment III:

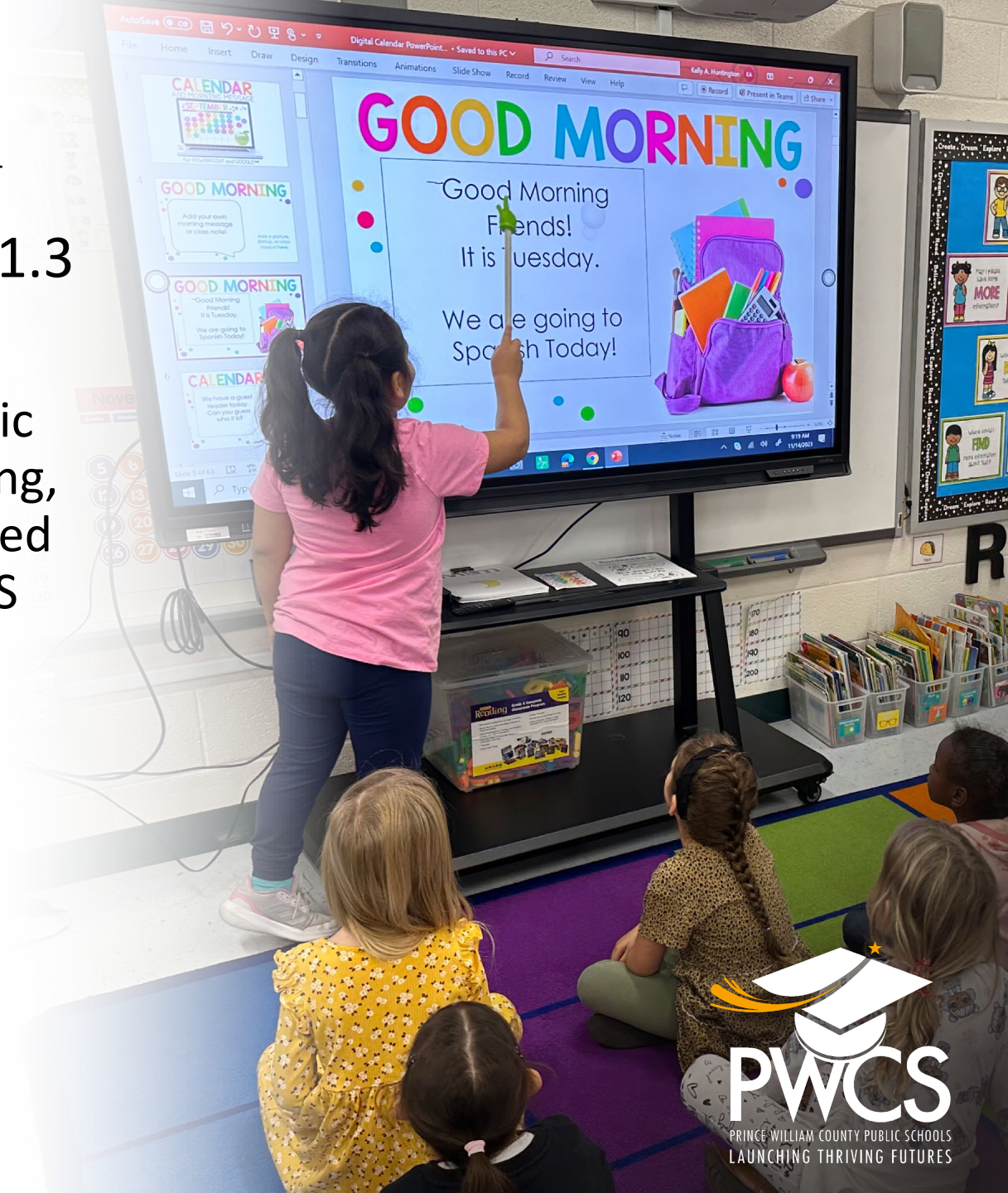
- Objective 3.1: PWCS will engage families as authentic partners in education to support academic progress.
- Objective 3.3: PWCS will ensure honest, transparent, and- two-way communication with families, schools, and the community to foster trusting relationships.

Alignment with Strategic Plan



Learning and Achievement for All

- PWCS Strategic Plan Objective 1.1, 1.2, 1.3
- Theory of Action overall
 - Have three Theory of Actions with a specific focus in academic literacy in reading, writing, and computation which will be implemented in all contents with a greater focus on FPHS ELLs and SWDs.



Learning and Achievement for All

• Impact Goals

- Impact Goal 1: FPHS will attain a 10% increase for English Learners (59% to 69%) and a 4% increase for students with disabilities (76% to 80%) from the previous year in Algebra 1 proficiency on the end of course SOL.
- Impact Goal 2: 80% of students with disabilities and English learners will master Algebra I division wide unit assessments scoring a C or higher.
- Impact Goal 1: FPHS will attain a 10% increase for English Learners (45% to 55%) and a 3% increase for students with disabilities (69% to 72%) from the previous year in Reading proficiency on the end of course SOL.
- Impact Goal 2: 80% of students with disabilities and English learners will demonstrate mastery of the standards measured on each reading summative assessment by scoring a C or higher.



Learning and Achievement for All

• Impact Goals

- Impact Goal 3: FPHS will attain a 10% increase for English Learners (32% to 42%) and a 3% increase for students with disabilities (43% to 46%) from the previous year in Writing proficiency on the end of course SOL.
- Impact Goal 4: 80% of students with disabilities and English learners will demonstrate mastery of the standards measured on each writing summative assessment by scoring a C or higher.
- Impact Goal 1: FPHS will attain from a 79.87% to 83% overall proficiency on the Biology SOL in June 2025. The increase will include a 10% gain for English Learners (from 32% to 42%) and a 6% gain for students with disabilities (from 59% to 65%) in Biology proficiency on the end of course SOL.
- Impact Goal 2: 80% of general education students and 60% of EL and students with disabilities will earn a C or higher on 100% of standards measured each quarter in PWCS Biology Unit Assessments





Positive Climate and Culture

- PWCS Strategic Plan Objective: 2.1, 2.2, 2.3
- Theory of Action
 - If we establish stronger relationships with families of EL Hispanic students ..., then staff can educate families via appropriate communication devices about school attendance, which will lead to 10% decrease in EL Hispanic chronic absenteeism
- Impact Goals
 - By June 2025, there will be a 10% decrease in chronic absenteeism of EL Hispanic students. (42.46% to 32.26%)

What to know about Chronic Absenteeism?

- A student is defined as "chronically absent" if he or she misses 10% or more of school in one school year.
- This equates to 18 days of school and includes both excused and unexcused absences.
- State accreditation standards charge schools with keeping 15% or less of students in the chronically absent category.
- In 2023-2024, 18% of FPHS students were chronically absent (down 3% from prior year)

Attendance Matters



Students with fewer absences:

- are more likely to graduate on time
- have better grades
- have more post-secondary opportunities

DON'T LET ABSENCES ADD UP!

Missing two days a month puts you on a path toward **chronic absenteeism**



KNOWLEDGE IS POWER
ATTEND EVERY HOUR
PWCS

Thank you for making attendance a top priority

- Make sure students are in school on time, every day
- Plan family trips when school is not in session
- Schedule medical appointments after school and on days off, if possible



Learn more about PWCS
Attendance Support and Resources

Days off for students in 2024-25

First Quarter

August 30

Labor Day Weekend Holiday

September 2

Labor Day Weekend Holiday

October 3

Holiday (observance of Rosh Hashanah)

October 14

Teacher Workday

Second Quarter

November 1

Holiday (observance of Diwali)

November 4

Parent Conferences/Teacher Workday

November 5

Teacher Workday

November 11

Veterans Day Holiday

November 27 - 29

Thanksgiving Break

December 23 - January 3

Winter Break

(Holidays observed include Christmas, Hanukkah, Kwanzaa, and New Year's Day)

Third Quarter

January 20

Martin Luther King Jr. Holiday

January 21

Teacher Workday

January 22

Parent Conferences/Teacher Workday

February 17

Presidents Day Holiday

Fourth Quarter

March 28

Teacher Workday

March 31

Holiday (observance of Eid al-Fitr)

April 14-18

Spring Break

(Holidays observed include Passover,

Good Friday, and Easter)

April 21

Teacher Workday

May 26

Memorial Day Holiday



View more details on the
2024-25 school year calendar


Family and Community Engagement

- PWCS Strategic Plan Objective: 3.1
- Theory of Action
 - If we increase engagement, transparency of communication..., then stakeholders will engage in providing feedback and stay consistently involved in PAC ..., which will lead to FPHS meeting the High Functioning Principal Advisory Council Indicators (HFPAC) at 80% or higher by the end of the year.
- Impact Goal
 - By the end of June 2025, Forest Park High School will have a high-functioning school advisory council as measured by the HFPAC Indicators.



Principal's Advisory Council (PAC)

- PAC is a team of community representatives that meet monthly with school administration. The purpose of PAC
 - Identify school needs,
 - Review and evaluate the schools' CIP,
 - Facilitate communication between the FPHS administration and the school community.



Forest Park High School

FOREST PARK PRINCIPAL'S ADVISORY COUNCIL

ABOUT US

The Principal's Advisory Council (PAC) is a team of community representatives that meet monthly with school administration. The purposes of the Principal's Advisory Council:

- Identify school needs
- Review and evaluate the school's Continuous Improvement Plan
- Facilitate communication between the FPHS Administration and the school community.

WHO ARE WE SEEKING?

We are seeking any member of the Forest Park community who is committed to making Forest Park a better place for our students, families, teachers, and staff.

MEETINGS



Meetings take place once a month on Mondays in the School Library at 7pm

- Tentative dates:
 - September 16
 - October 21
 - November 18
 - January 13
 - February 10
 - March 10
 - April 21
 - May 19

CONTACT US:

OLSONVA@PWCS.EDU

Register at



To register for PAC



A close-up photograph of a person's hands holding a light blue smartphone. The person is wearing a necklace with colorful beads. The background is a plain, light-colored wall.

PWCS Cell Phone/Wireless Communication Device Usage

The Why?

- The intent of the Prince William County Public Schools cell phone and wireless communication device usage pilot is to support students in their academic success by removing a major distraction while promoting face-to-face social interactions and connections.
- Goals of the PWCS cell phone pilot:
 - **Promoting Engagement:** By reducing the influence of social media-related disruptions, we aim to enhance student engagement and participation in classroom activities.
 - **Prioritizing Social Interactions:** Encouraging face-to-face interactions among students fosters meaningful connections and interpersonal skill development.
 - **Supporting Academic Success:** Removing the temptation of constant personal electronic device usage supports students in achieving academic success by minimizing interruptions to the learning process.
 - **Modeling Appropriate Technology Use:** As a technology-forward school division, PWCS is committed to modeling and promoting responsible digital citizenship among our students.

The Guidelines

Exceptions to these guidelines may be granted as disability accommodations through Section 504 plans or IEPs when necessary to ensure student access to school and school-sponsored activities. Exceptions may also be granted as part of a student's health, safety, or other support plan.

- **9-12 Grade Students:**

- Personal wireless communication devices, including earbuds, must be silenced, and stored away during all instructional periods.
- Dual-purpose watches are allowed, but wireless/cellular features must be turned off during instructional times (e.g., must be in airplane mode)
- Personal wireless communication devices and one earbud are permitted during lunchtimes and during hallway passing times but are prohibited in all locker rooms and restrooms.
- Cell phones and wireless communication devices may be used on school buses provided the device does not distract the driver, compromise safety, or violate the Prohibited Content and Use for All Students provisions detailed below.

Discipline
Response
Matrix-
Begins Sept.

3

1

Action

- Device surrendered

Consequence

- Device returned at end of class period

Documentation

- Student signs Acknowledgment Form
- Recorded in The Hub

2

Action

- Device surrendered
- Device locked in main office

Consequence

- Device returned at end of school day

Documentation

- Teacher/Staff member notifies parent/guardian
- Recorded in The Hub

3

Action

- Device surrendered
- Device locked in main office

Consequence

- Student completes Healthy Cell Phone Use Module
- Parent/Guardian must retrieve the device from the school

Documentation

- Referral generated
- Parent/Guardian signs Acknowledgment of Further Consequences Form

Future Plans

- Feedback on effectiveness of guidelines and associated processes will be gathered from all stakeholders during the fall.
- Policies and procedures will be adjusted as needed based on stakeholder feedback and available data.
- By January 1, 2025, and in accordance with Executive Order 33 issued by Governor Youngkin, all school divisions shall adopt policies and procedures related to Cell Phone-Free Education.
 - August 15, 2024- VDOE to publish draft guidance considering feedback from stakeholders.
 - September 16, 2024- VDOE to publish final guidance considering feedback from stakeholders.



Upcoming:

- PSAT Day October 9 (Grades 9-11, Grade 12 is asynchronous)
- PWCS 2024 College Fairs
 - October 9, 6-8 p.m. @ Hylton High School
 - October 17, 6-8 p.m. @ Osbourn Park High School)
- Touchbase November 4, 7:30-9:30 AM
- Homecoming Game November 8
- Homecoming Dance November 9
- SAT Day for Juniors April 2 (Grade 12 is asynchronous)
- WorkKeys and SOL Writing for 12th grade students requiring VC
- IT Information Nights (November 14, January 15)

College Fair Info



PWCS 2024 COLLEGE FAIRS

OCT 9 | HYLTON HIGH SCHOOL
6-8 p.m.

OCT 17 | OSBOURN PARK HIGH SCHOOL
6-8 p.m.

20-minute Tiny Talks

- ✓ Military College Pathways
- ✓ Financial Aid & Scholarships
- ✓ Overview of the Common App

Over **100** colleges & universities represented

Register@StriveFair.com
Registration is encouraged and allows students to easily share contacts with representatives.
More info @ <https://tinyurl.com/PWCSEFAIR>



PWCS 2024 FERIAS UNIVERSITARIAS

OCT 9 | ESCUELA SECUNDARIA HYLTON
6 a 8 p.m.

OCT 17 | ESCUELA SECUNDARIA OSBOURN PARK
6 a 8 p.m.

Charlas de 20 minutos

- ✓ Educación universitaria a través del servicio militar
- ✓ Ayuda financiera y becas
- ✓ Descripción general de la plataforma *Common App*

Más de **100** universidades y centros de educación superior

Inscríbese en StriveFair.com
Se recomienda la inscripción, ya que permite a los estudiantes compartir fácilmente la información de contacto con los distintos representantes.
Más información en: <https://tinyurl.com/PWCSEFAIR>



Please complete the form via the QR Code and thank you for joining us! See you on 10/16.



FPHS PAC Attendance

